

DLG Test Report 7379

BEIJING U-MILK MILKING INDUSTRY Co., Ltd.

Breadcrumb Rubber Mat

Deformability/Elasticity, Permanent Tread Load, Abrasion,
Slip resistance, Acid resistance



BEIJING U-MILK MILKING INDUSTRY
BREADCRUMB RUBBER MAT

- ✓ Deformability/Elasticity
- ✓ Permanent Tread Load
- ✓ Abrasion
- ✓ Slip resistance
- ✓ Acid resistance

DLG Test Report 7379



Overview

A test mark “DLG-APPROVED for individual criteria“ is awarded for agricultural products which have successfully fulfilled a scope-reduced usability testing conducted by DLG according to independent and recognised evaluation criteria. The test is intended to highlight particular innovations and key criteria of the test object. The test may contain criteria from the DLG test scope for overall tests, or focus on other value-determining characteristics and properties of the test subject. The minimum requirements, test conditions and procedures as well as the evaluation bases of the test results will be specified in consultation with an expert group of DLG. They correspond to the recognised rules of technology, as well as scientific and agricultural knowledge and requirements. The successful testing is concluded with the publication of a test report, as well as the awarding of the test mark which is valid for five years from the date of awarding.



The DLG Approved Test “Deformability/Elasticity, Permanent Tread Load, Abrasion, Slip resistance, Acid resistance” includes technical measurements on test stands of the DLG Test Center. The deformability and elasticity, the abrasion resistance, the slip resistance, the acid resistance, the cleaning distance were measured and a permanent tread load was applied. The test was based on the DLG Testing Framework for elastic stable flooring, as of December 2018 and DIN 3763:2022-08 (Elastic floorings for cattle and dairy cows walking and rest surfaces – Requirements and testing).

Other criteria were not investigated.

Assessment in brief

The Breadcrumb Rubber Mat, an elastic alley mat, was investigated with regard to durability and comfort properties on test stands in the DLG Approved single criteria test. The deformability and elasticity of the mat, the abrasion resistance, the slip resistance, the acid resistance were measured and a permanent tread load was applied.

Requirements of DIN 3763 are fulfilled.

Table 1:
Assessment in brief

DLG QUALITY PROFILE	Evaluation*
Deformability and elasticity in new condition	■ ■ ■ ■ ■
Deformability and elasticity following endurance test	■ ■ ■ ■ ■
Lasting deformation following endurance test	■ ■ ■ ■ ■
Abrasion/Wear resistance	■ ■ ■ ■ ■
Resistance to feed acid mixture	■ ■ ■ ***
Resistance to uric acid	■ ■ ■ ***
Resistance to sulfurous acid	■ ■ ■ ***
Resistance to ammonia	■ ■ ■ ***
Resistance to barn disinfectants	■ ■ ■ ***
Resistance to peracetic acid	■ ■ ■ ***
Slip resistance	■ ■ **

DLG Evaluation range:

* ■ ■ ■ or better = meets, exceeds or significantly exceeds the established DLG standards, ■ ■ = meets the legal requirements for marketability, ■ = failed

** Single criteria slip resistance: ■ ■ = passed, ■ = failed

*** Single criteria acid resistance: ■ ■ ■ = resistant, ■ ■ = limited resistant, ■ = failed

The Product

Manufacturer and Applicant

BEIJING U-MILK
MILKING INDUSTRY Co., Ltd
Room 3625, 6/F building No. 141,
Zhuan Chang Bei Li, Tongzhou
District, Beijing, China

Product:
Breadcrumb Rubber Mat

Contact:
Telephone +86 13911277730
houjindong_umilk@163.com

Description and technical data

The Jupiter F cow mattress tested here, is an elastic floor covering for the resting area in cubicle houses.

Breadcrumb Rubber Mat

- black rubber mat
- with square profile with star design and grooves hissing the squares (height of squares approx. 3 mm, width of grooves approx. 20 mm)
- and studs on the bottom (thickness of the mat approx. 20,5 mm, knob height approx. 4 mm, diameter of the knobs approx. 9 mm)
- Shore A hardness: approx. 85

The Method

Deformability and elasticity

The deformability is measured in new condition and following permanent tread load using a round steel foot and a penetration force of 2,000 N (corresponding to approx. 200 kg).

Permanent tread load

The permanent tread load is measured on a test stand with a round steel foot in the standard test programme with 250,000 alternating loads at 5,000 N (corresponding to approx. 500 kg).

The steel foot is adapted to the natural conditions as an “artificial cow foot”. The foot has a diameter of 105 mm and therefore a contact area of 75 cm²; the carrying edge of the hoof is simulated by a 5 mm wide ring on the periphery of the sole that projects 1 mm above the rest of the surface.

Abrasion test

In a standardised abrasion test with 10.000 cycles the top cover was grinded with an emery cloth (granulation 280) and a grinding pressure of 500 N (= 8.1 N/cm² surface pressure). The friction element was cooled continuous with water to prevent an influence of the generated heat during the abrasion test. The size of the grinded area was 61,5 cm².

Slip resistance

The measurements were carried out with the ComfortControl test rig of the DLG test centre.

A loaded (10 kg) round plastic foot (105 mm diameter, with a contact area of 75 cm², 3 mm wide ring at the periphery of the ground) was pulled with a velocity of 20 mm/s across the mat.

Acid resistance

A permanent dipping test in accordance to DIN EN ISO 175:2000 (performance of synthetic material against liquid chemicals) was carried out. Test samples (size 30 x 30 mm) were completely dipped into different test liquids for 24 hours and 28 days (room temperature 20° Celsius).

In the 28 days test the liquids were changed weekly. After the 28 days the samples were washed with distillate water and dried for 24 hours. Before and after the dipping the weight, the dimensions and the shore hardness (shore A) of the test samples were measured.

Additional visual evaluation was done for alterations like colour changing, swelling, destruction or crystallisation. All samples were evaluated in comparison to the standard water.

Detailed account of the test results

Deformability and elasticity

In the penetration test in new condition with a round steel foot the penetration depth was 2.0 mm. This results in a calculated surface pressure of 26.7 N/cm².

Elasticity was measured after the alley mat had been exposed to a permanent tread load exerted by the steel foot (250.000 alternating loads of 5.000 N). After the endurance test, the penetration depth increased to 2.1 mm (see Fig. 2).

Permanent tread load

No noticeable wear was observed following exposure to permanent tread load on a test stand with 250,000 alternating loads at 5,000 N. No lasting deformation was observed.

Abrasion test

The abrasion depth after 10,000 cycles amounted to 2.4 mm, this

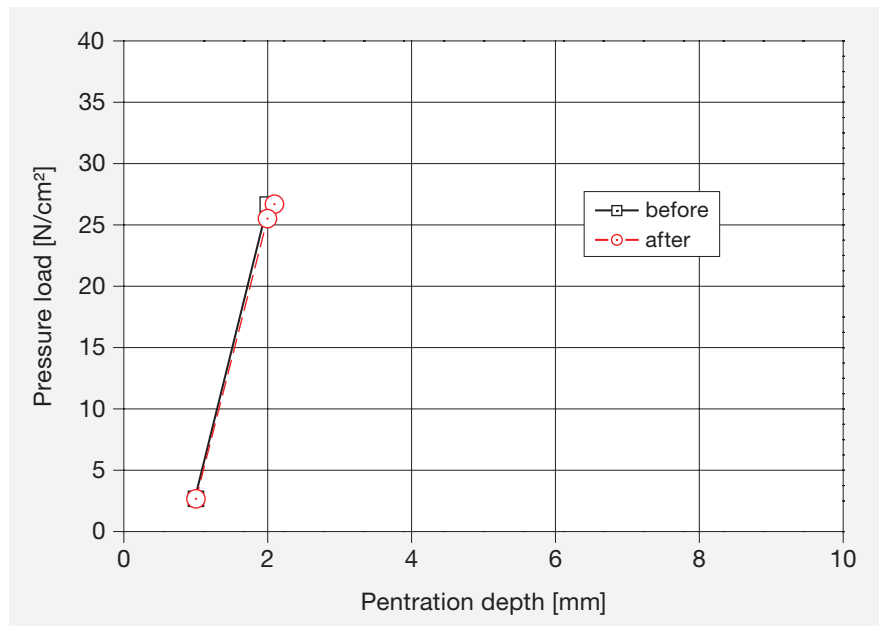


Figure 2:
Deformability as a function of bearing pressure

corresponds to approximately 11.7 % of the rubber thickness.

Of the ground surface 13.6 grams were rubbed off.

The abrasion depth and the grit implicate a satisfactory wear resistance of the rubber mat.

Slip Resistance

The slide pulling tests showed a good slip resistance on the dry or wet rubber mat surface in new condition. The measured friction coefficients (μ) surpassed the minimal value of $\mu = 0,40$ (DIN 3763) and $\mu = 0.45$ (DLG test program).

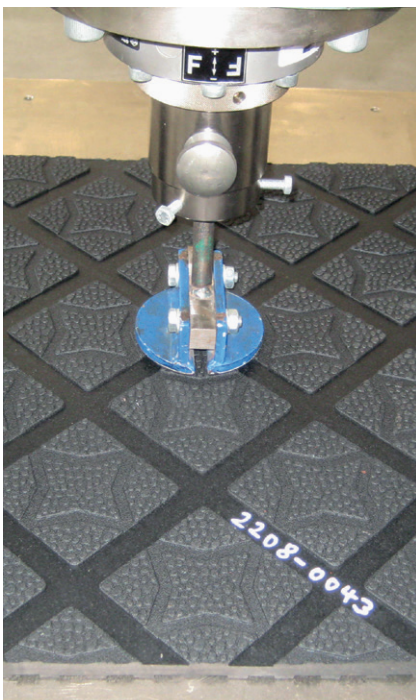


Figure 3:
Deformation measurement



Figure 4:
Test sample after abrasion test

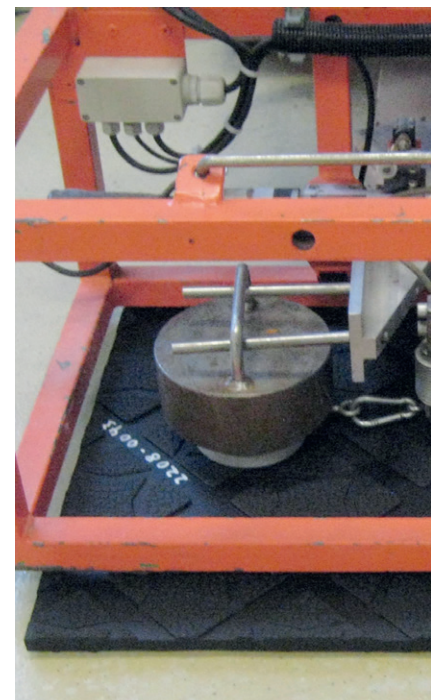


Figure 5:
Slip resistant measurement

Acid resistance

The rubber mat was resistant against the used test liquids

The differences in weight, thickness and Shore A hardness between the acid treated and not acid treated samples were minor and lay in the range of water as standard.

Against the used liquids the rubber mat seems to be suited for the described use.

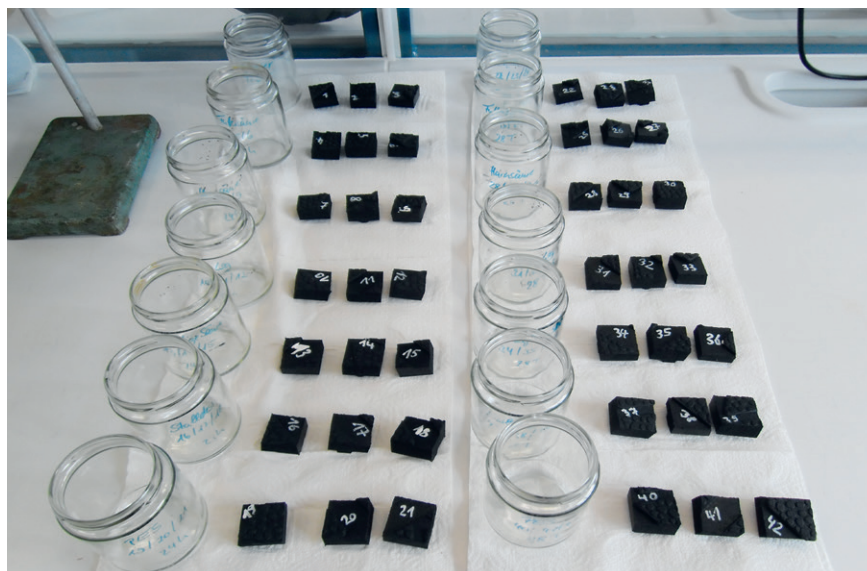


Figure 5:
Test samples after acid test

Table 4:
Test liquids and results – acid resistance

Test liquid	Concentration	Result after 24 hours residence time	Result after 28 days residence time	Evaluation
Feed acid mixture				
	concentrate, pH 2	no changing	no changing	resistant
Excrement acids				
Uric acid	saturated urea solution (0,4 %)	no changing	no changing	resistant
Sulfurous acid	5-6 % SO ₂	no changing	no changing	resistant
Ammonia solution	32 % solution	no changing	no changing	resistant
Disinfection liquid				
Barn Disinfection liquid	2%-solution of a product with formic acid and glyoxyl acid	no changing	no changing	resistant
Peracetic acid	3000 ppm	no changing	no changing	resistant

Summary

Based on test-stand investigations, the criteria tested in this DLG Approved Test evaluate the comfort and durability properties of the Breadcrumb Rubber Mat for use in the alleys in cubicle houses.

The tested Breadcrumb Rubber Mat met the requirements of DIN 3763 and the DLG Testing Framework with respect to the investigated criteria.

Further information

Testing agency

DLG TestService GmbH,
Gross-Umstadt location

The tests are conducted on behalf of DLG e.V.

DLG test framework

DLG Testing Framework for elastic stable flooring,
as of December 2018

DIN 3763:2022-08 (Elastic floorings for cattle and
dairy cows walking and rest surfaces – Requirements
and testing)

Department

Agriculture

Division head

Dr. Ulrich Rubenschuh

Test engineer(s)

Dr. Harald Reubold*

* Author

DLG – the open network and professional voice

Founded in 1885 by the German engineer Max Eyth, DLG (Deutsche Landwirtschafts-Gesellschaft – German Agricultural Society) is an expert organisation in the fields of agriculture, agribusiness and the food sector. Its mission is to promote progress through the transfer of knowledge, quality standards and technology. As such, DLG is an open network and acts as the professional voice of the agricultural, agribusiness and food sectors.

As one of the leading organisations in the agricultural and food market, DLG organises international trade fairs and events in the specialist areas of crop production, animal husbandry, machinery and equipment for farming and forestry work as well as energy supply and food technology. DLG's quality tests for food, agricultural equipment and farm inputs are highly acclaimed around the world.

For more than 130 years, our mission has also been to promote dialogue between academia, farmers and

the general public across disciplines and national borders. As an open and independent organisation, our network of experts collaborate with farmers, academics, consultants, policymakers and specialists in administration in the development of future-proof solutions for the challenges facing the agriculture and the food industry.

Leaders in the testing of agricultural equipment and input products

The DLG Test Center Technology and Farm Inputs and its test methods, test profiles and quality seals hold a leading position in testing and certifying equipment and inputs for the agricultural industry. Our test methods and test profiles are developed by an independent and impartial commission to simulate in-field applications of the products. All tests are carried out using state-of-the-art measuring and test methods applying also international standards.

Internal test code DLG: 2208-0043

Copyright DLG: © 2022 DLG



DLG TestService GmbH
Gross-Umstadt location

Max-Eyth-Weg 1 • 64823 Groß-Umstadt • Germany
Phone: +49 69 24788-600 • Fax: +49 69 24788-690
Tech@DLG.org • www.DLG.org

Download of all
DLG test reports free of charge
at: www.DLG-Test.de